

## Help Document for Accessing FTP Server for Apollo Forest Products.

If you are having trouble accessing our FTP server via the link on our WebPage you can go to the FTP server address directly using the Address Bar in your browser as shown.

If you do not see the Address Bar, click on  
View > Toolbars > Address Bar  
To make it appear.

Type [ftp.apolloforest.com](ftp://ftp.apolloforest.com)

A Login Box will popup

For the Public FTP server type:  
Username: public  
Password: apollo2  
As shown at right.

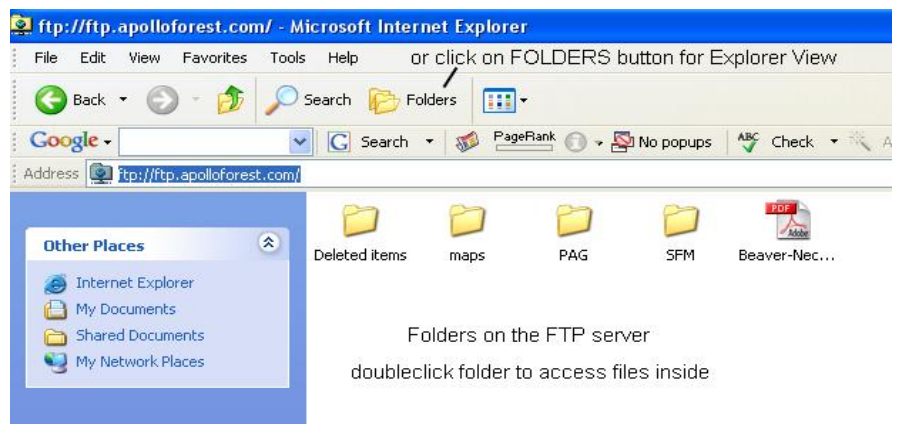
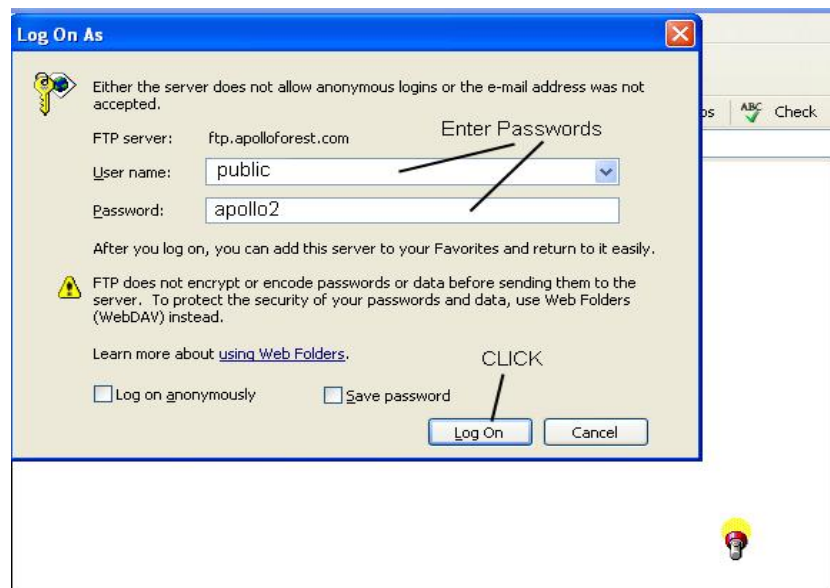
If you are accessing the private FTP server type in the  
Username and passwords that were sent to you.

Then click the LOGON button.

Once your computer has logged in you will see the folders available on the server which contain various files and documents.

Doubleclick on a file folder to see what is inside and Upload or Download as needed.

If you prefer the Windows or File Explorer View click on the Folders button as shown at right.



The Windows or File Explorer interface splits your screen into 2 parts

The left side is your computer  
The right side is the FTP server

You can drag and drop files back and forth just like you move files around in your own system.

Allow extra time for the upload or download process to complete. Some of the files especially the map files are very large (20MB plus) and take a few minutes to download.

If you experience difficulty using our FTP server please contact Darwyn Koch at 250-996-8730 or [dkoch@apolloforest.com](mailto:dkoch@apolloforest.com) for assistance.

